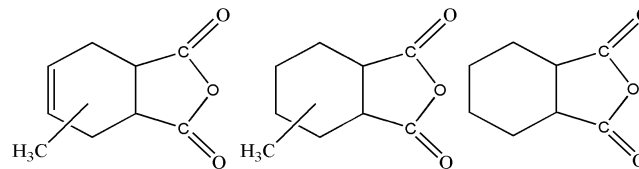


# CARA<sup>®</sup> PLUS Epoxy Hardeners



CARACHEMIE

| Product   | Viscosity [mPa.s] | Color (APHA) | Odor      | Jodine value (%)          | Typical application  | Properties  |
|---|-------------------|--------------|-----------|---------------------------|--|---|
| <b>MeTbHPA (Methyl Tetrahydro Phthalic Anhydride)</b> |                   |              |           |                           | <b>Provide good electric and mechanical properties. Free acid &lt; 0,5%.</b>               |   |
| <b>AMT-125</b>  | 50 - 220          | < 7          | less      |                           | high pressure vessels and pipes  | Premixed type with accelerator. Excellent mechanical properties, counter grade to Polynt MTHPA 700K3.           |
| <b>AMT-122</b>  | 30 - 50           | < 100        | nearly no |                           | heavy generator, motor   | Provides good insulation properties. Counter grade to Hitachi HN-2200.  |
| <b>AMT-120</b>  | 30 - 50           | < 100        | nearly no |                           | small electronic parts   | Excellent electric and mechanical properties, lower tendency absorb moisture. Counter grade to Hitachi HN-2000. |
| <b>MeHHPA (Methyl Hexahydro Phthalic Anhydride)</b>   |                   |              |           |                           | <b>Provide transparency, good electric and mechanical properties. Free acid &lt; 0,5%.</b> |   |
| <b>AMH-850</b>  | 50 - 80           | 5,0          | less      | 0.2                       | transparent electric parts (High-end LED)  | Counter grade to Polynt MHPA.   |
| <b>AMH-700</b>  | 50 - 80           | 5,0          | less      | 0.2                       | transparent electric parts (LED)   | Premixed type with MeHHPA and HHPA. Provides transparency. Counter grade to New Japan Chemical MH-700G.         |
| <b>AMH-650</b>  | 50 - 80           | 10,0         | less      | 1.0                       | transparent electric parts (LED)   |   |
| <b>AMH-550</b>  | 50 - 80           | 10,0         | less      | 0.5                       | transparent electric parts and insulation  | Provides transparency and good insulation properties. Counter grade to Hitachi HN-5500.                         |
| <b>AMH-100</b>  | 50 - 80           | 10,0         | less      | 30                        | high pressure vessel and pipes   | Premixed type with MeTbHPA, HHPA, MeHHPA. Provides transparency and excellent mechanical properties.            |
| <b>HHPA (Hexahydro Phthalic Anhydride)</b>            |                   |              |           | <b>Melting point (°C)</b> | <b>Provides good electric and mechanical properties. Free acid &lt; 0,5%.</b>              |   |
| <b>AMH-330</b>  | 10 (molden)       | less         | 34,5      |                           | transparent electric parts and insulation  | Provides good insulation properties.  |